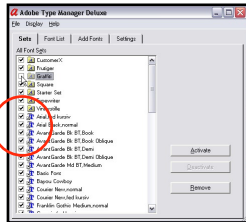


Managing Your Fonts

using Adobe Type Manager Deluxe 4.1

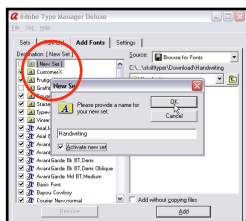
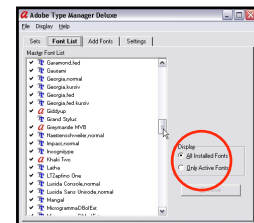


1. Start Adobe Type Manager Deluxe (ATM). It opens the **Sets** tab by default. This is where you manage your font sets.

If this is the first time using ATM there's only one set, called **Starter Set**. This is created by ATM when you install the software.

You can **activate** or **deactivate** single fonts or sets by selecting them and setting the checkboxes

2. The next tab is the **Font List** where you see an **alphabetical listing** of all fonts installed on your system. You can choose to see **all fonts**, or only the **fonts activated** in ATM.



3. The **Add Fonts** tab is where you **install fonts** on your system.

In the left window, you choose which set to install you font in. If you choose an existing font set, the font will be added to that collection of fonts.

If you choose the set named **[New Set]** a dialog will appear and ask you to name the new set.

In the window to the right, you tell ATM which **font** or **fonts** to install, and where to find them.

If you want to use the font directly from it's present position (like a shared font server) check the **add without copying file** checkbox

